

**PLEASE NOTE VERY IMPORTANT:** During this install process it is essential to keep the rebate clear of plaster/paint or any other debris. (Rebate is where the light sits when installed Figure 1.)

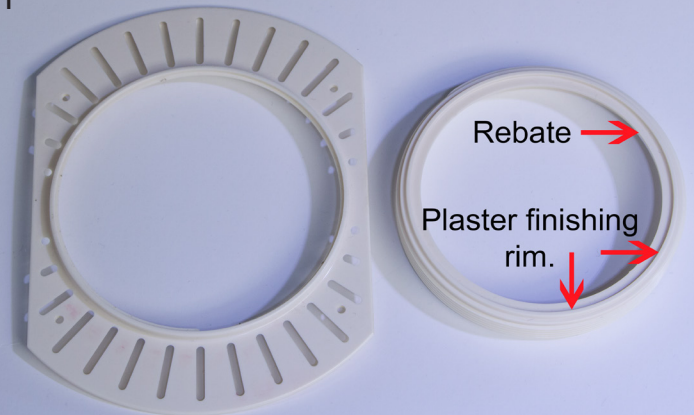
Trimless Resizing kit.

Contents:

1 x Baseplate TEC120B

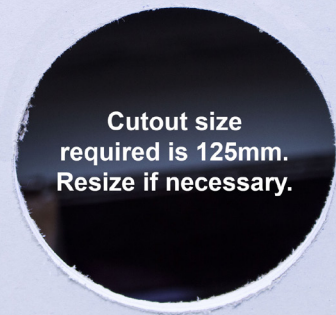
1 x Insert TEC096

1



The base requires a 125mm cutout, check the existing cutout resize to 125mm if required.

2



Remove all dust and debris from the area where the base will be positioned.

3

**Remove dust and debris.**



Run a piece of 40 grit sandpaper around the inner edge of the cutout to remove any residue from cutout if resized or just to prep surface.

4

**Run piece of 40 grit sandpaper round the inner edge.**



Once you have resized or prepped your cutout.  
Cut 2 "V" notches in either side of the cutout.  
This improves access when placing base through cutout.

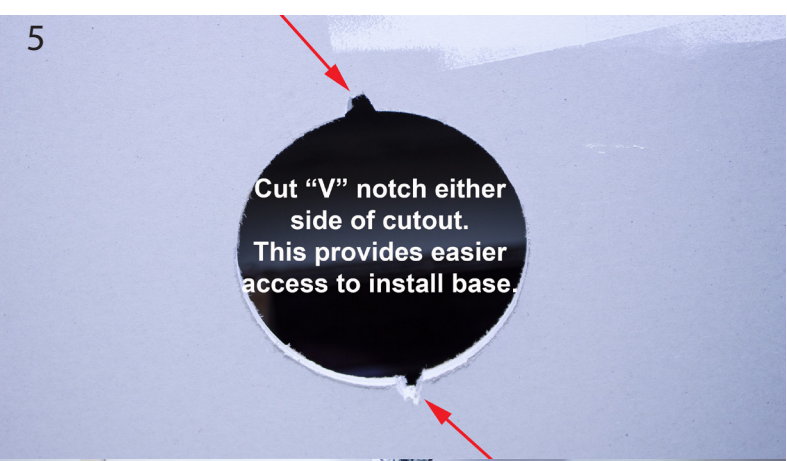
Using a small plastic bowl mix about 2/3 cup full's of bedding compound to a reasonably thick consistency. Screw the insert into the base 3/4 turns.

Apply 2-3 mm of compound to the base.

Slide the base up through the notches into the ceiling cavity.  
Turn base over so plaster is located down, pull down gently & use a short sliding motion to bed plaster/ insert into place.

Screw the insert into the base until the plaster finishing point is 2mm below the face of the ceiling.  
Use the straight edge to check the plaster finishing point is at the correct height.

5



Cut "V" notch either side of cutout. This provides easier access to install base.

6



Mix 2/3 cup full's of bedding compound.

7



Apply 2-3 mm of compound to base.

8

Slide base up through notches into ceiling cavity.



9

Turn base over so plaster is located down on the back of the drywall. Pull down gently on the insert and use short sliding motion to bed the plaster.



Place a small amount of plaster around the thread of the insert, this will lock the insert in place at the correct height once plaster has set. Leave plaster to set. Ensure the rebate is clear of all plaster.



Using 150 mm scraper apply second coat of plaster, tapering from the insert out to approx 150mm-200mm onto the face of the ceiling. Please note: Plaster must finish flush not above the insert. (Plaster finish rim) Ensure the rebate is clear of all plaster.



Once the second coat has set sand or scrape off any bumps. This makes it easier to apply the finishing coat. Apply about a 1mm of premixed finishing compound with 150mm scraper, tapering out from the insert. At this point your plaster will cover an area of approx 200-250mm diameter. Ensure the rebate is clear of all plaster.

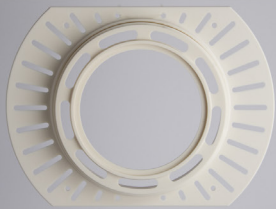
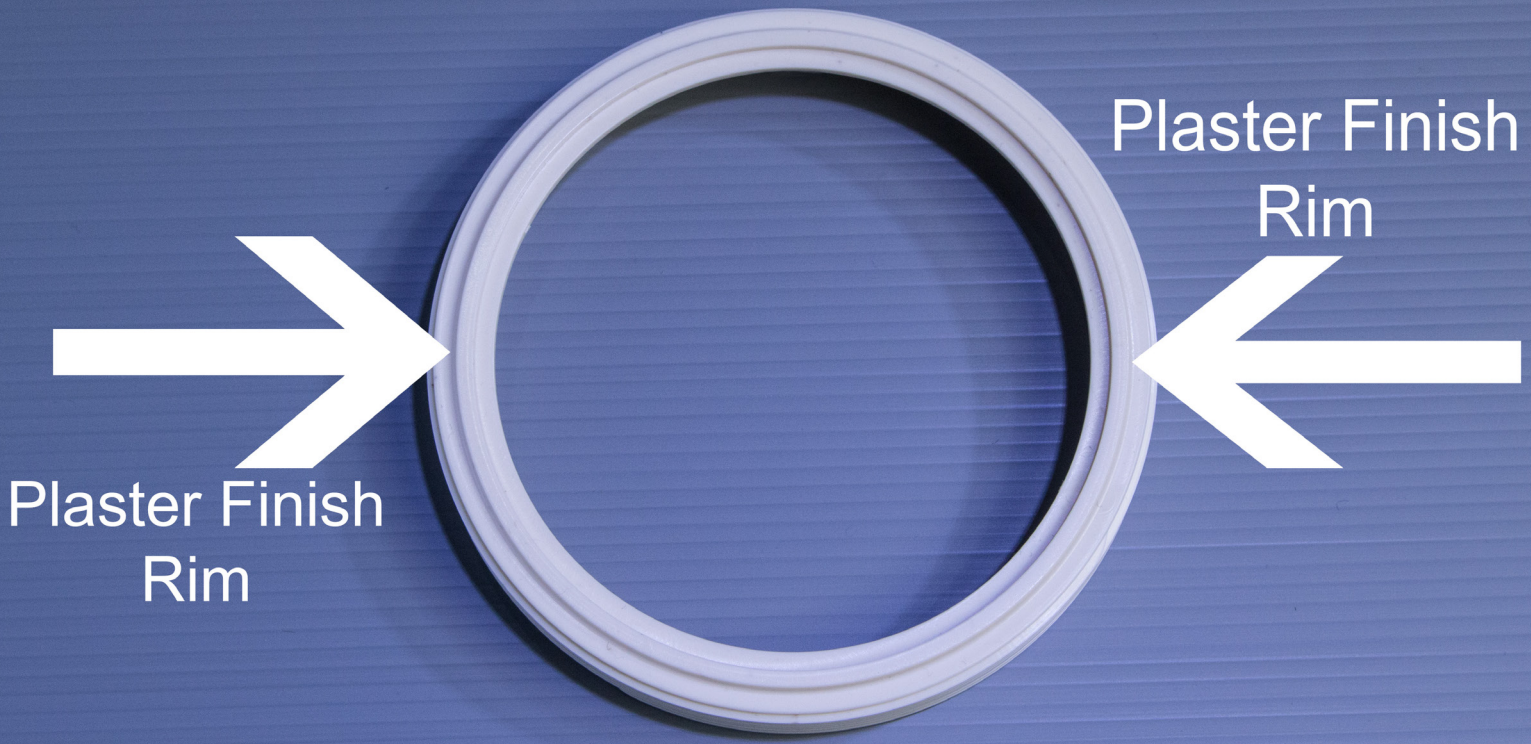


Leave to dry for 24 hours before sanding. Sand plaster back until the top of the insert rebate is clearly visible. ("plaster finish rim" see figure 1)

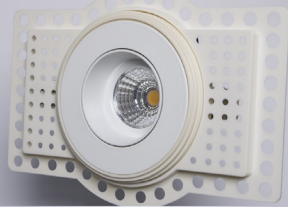
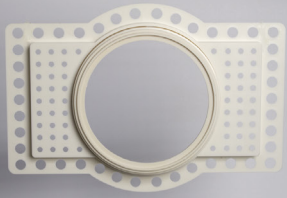


Please note: When painting ensure the rebate area is kept clean and clear from any paint. Use soft damp cloth to clean if necessary. Congratulations you are now complete and can install light into its trimless position. Always used a qualified electrician for all electrical work.

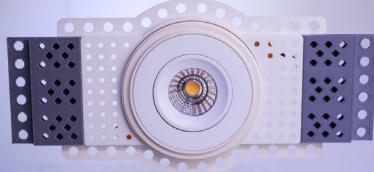
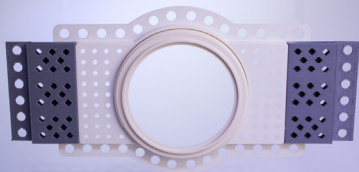




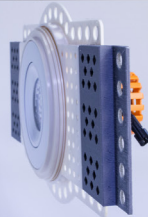
Resize single light  
Trimless install  
system



Double Halogen  
Trimless install  
system



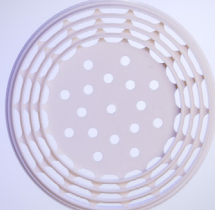
Triple Halogen  
Trimless install  
system



Facemount resize  
single light  
Trimless install  
system



Commercial resize  
single light  
install system



Standard  
not trimless  
resize single light  
install system

